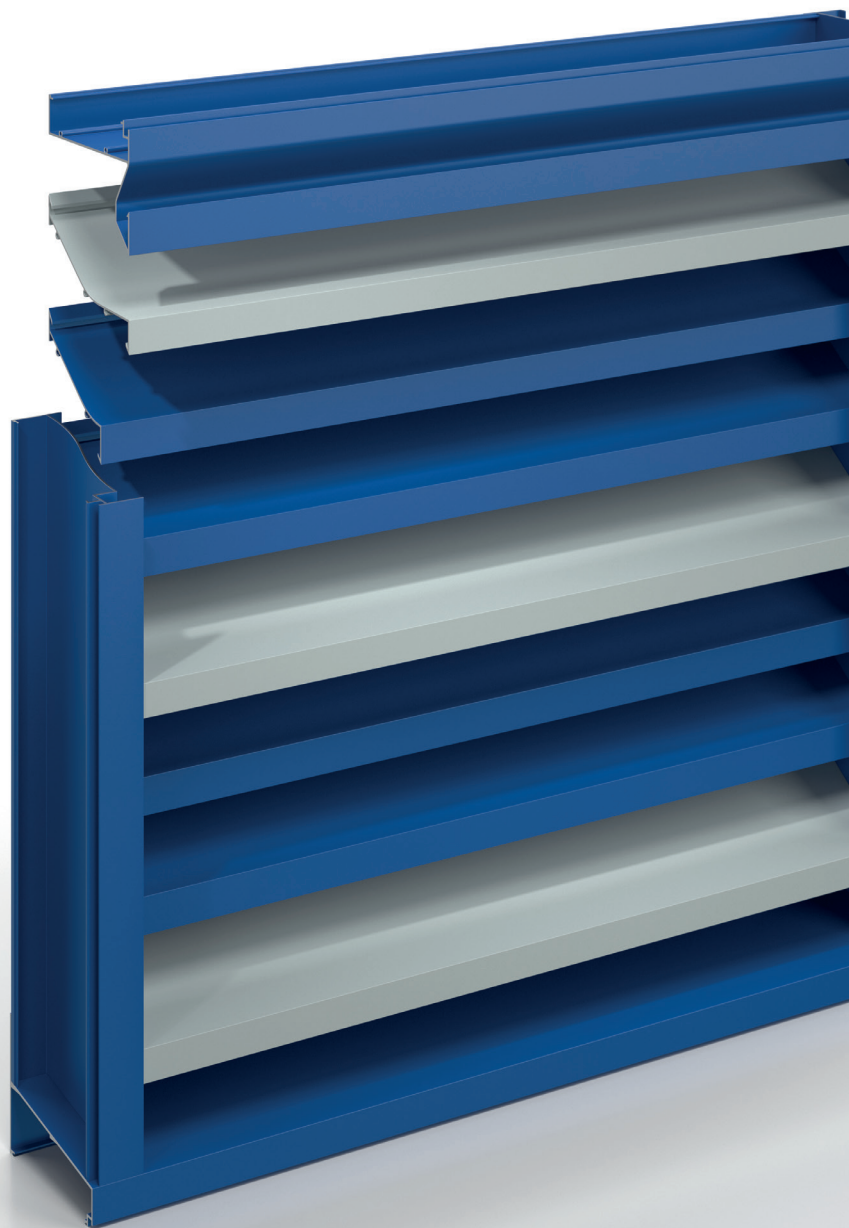


# Ventilation Louvres

B-6485 | Technical Datasheet

---



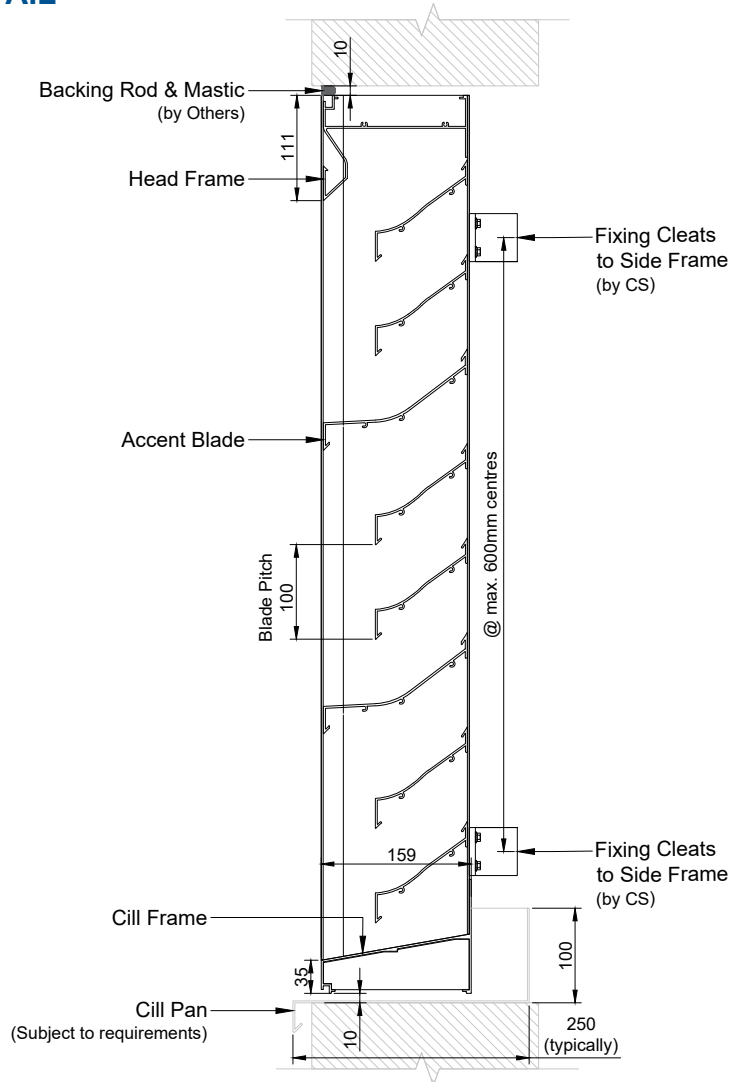
---

 [www.c-sgroup.co.uk/19024](http://www.c-sgroup.co.uk/19024)

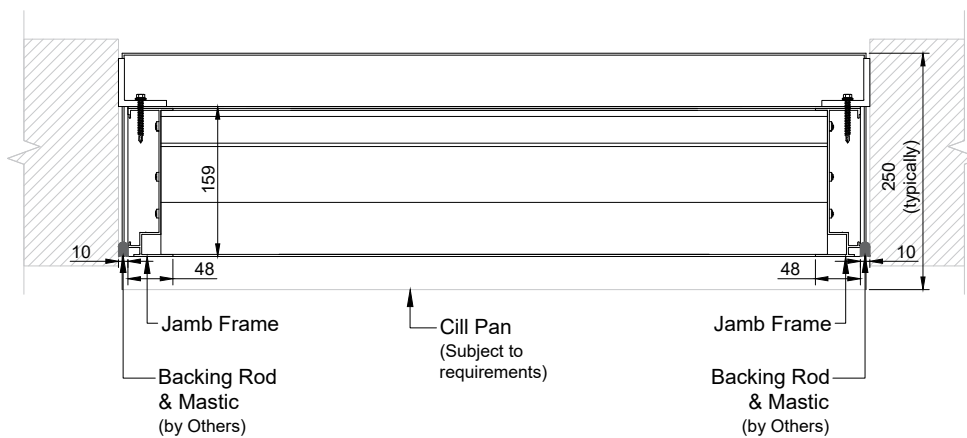
# Ventilation Louvres

B-6485 | Technical Datasheet

## STANDARD DETAIL



SECTION ON ELEVATION (1:8 @A4)



PLAN VIEW (1:8 @A4)

 [www.c-sgroup.co.uk/19024](http://www.c-sgroup.co.uk/19024)

All dimensions in millimeters unless otherwise stated. Do not scale from the drawing.

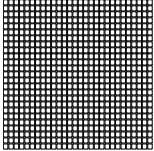
# Ventilation Louvres

B-6485 | Technical Datasheet

## STANDARD DETAIL

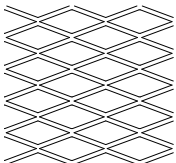
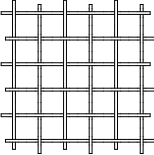
With Insect Mesh or Bird Guard

### INSECT MESH

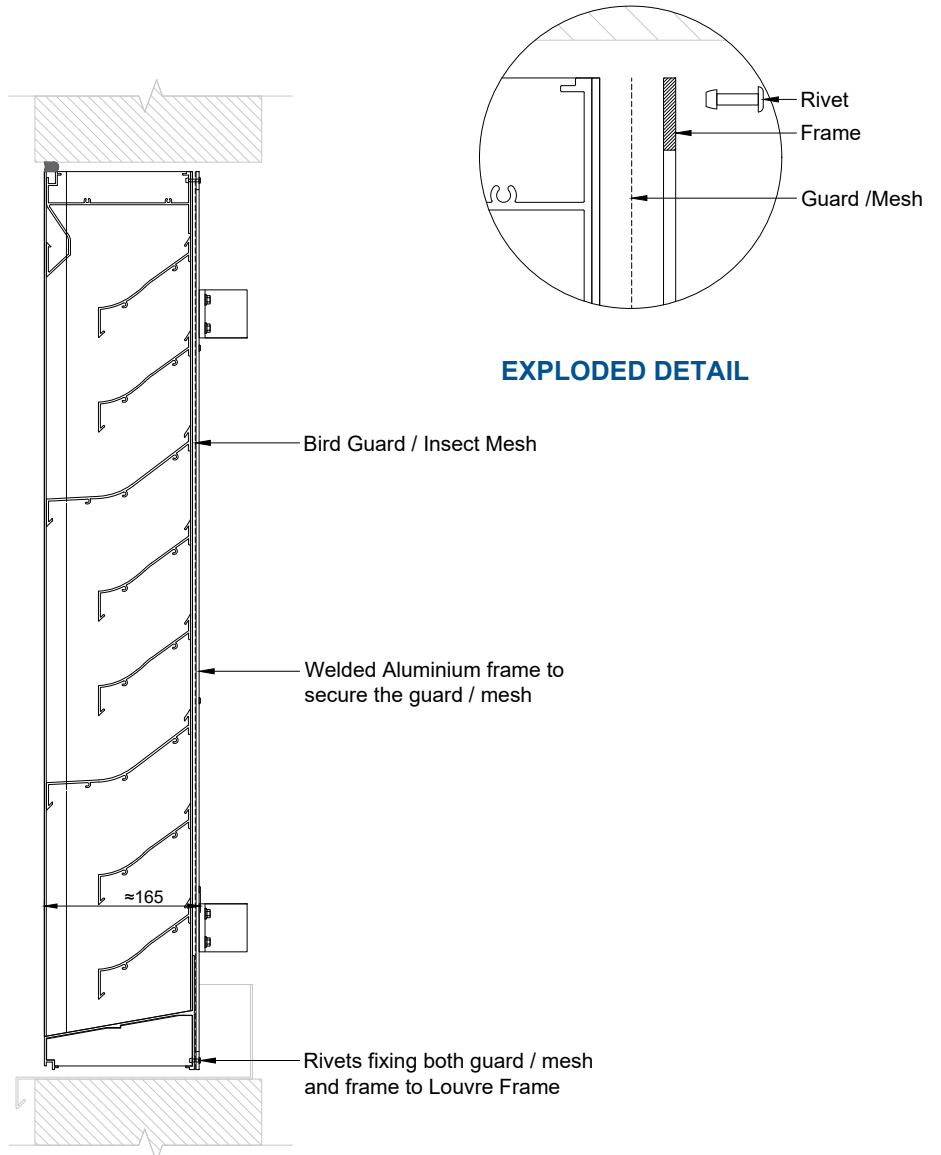


Fiberglass Mesh  
Black PVC coated  
(1:2 @A4)  
LV-1008  
72% Free Area

### BIRD/ VERMIN GUARDS

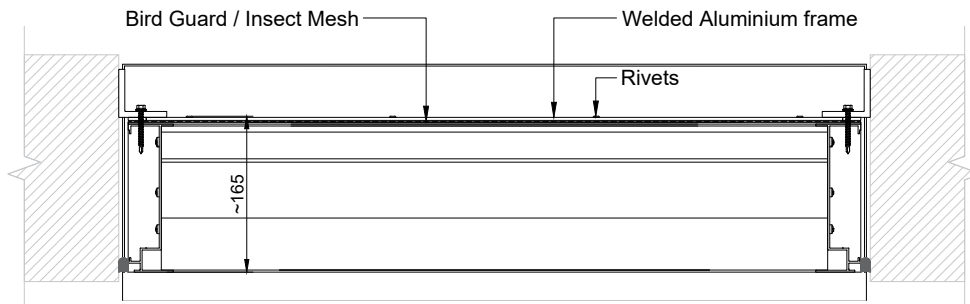


Flattened Aluminium  
38-85AF - (Option)  
(1:4 @A4)  
LV-0158  
73% Free Area



### EXPLODED DETAIL

### SECTION ON ELEVATION (1:8 @A4)

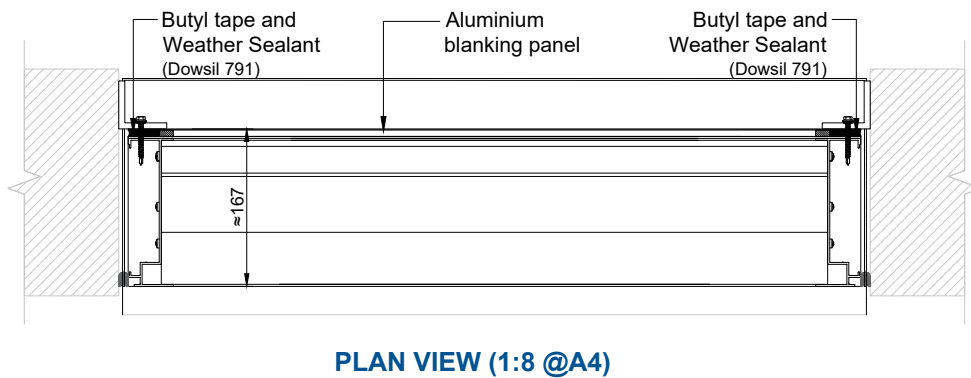
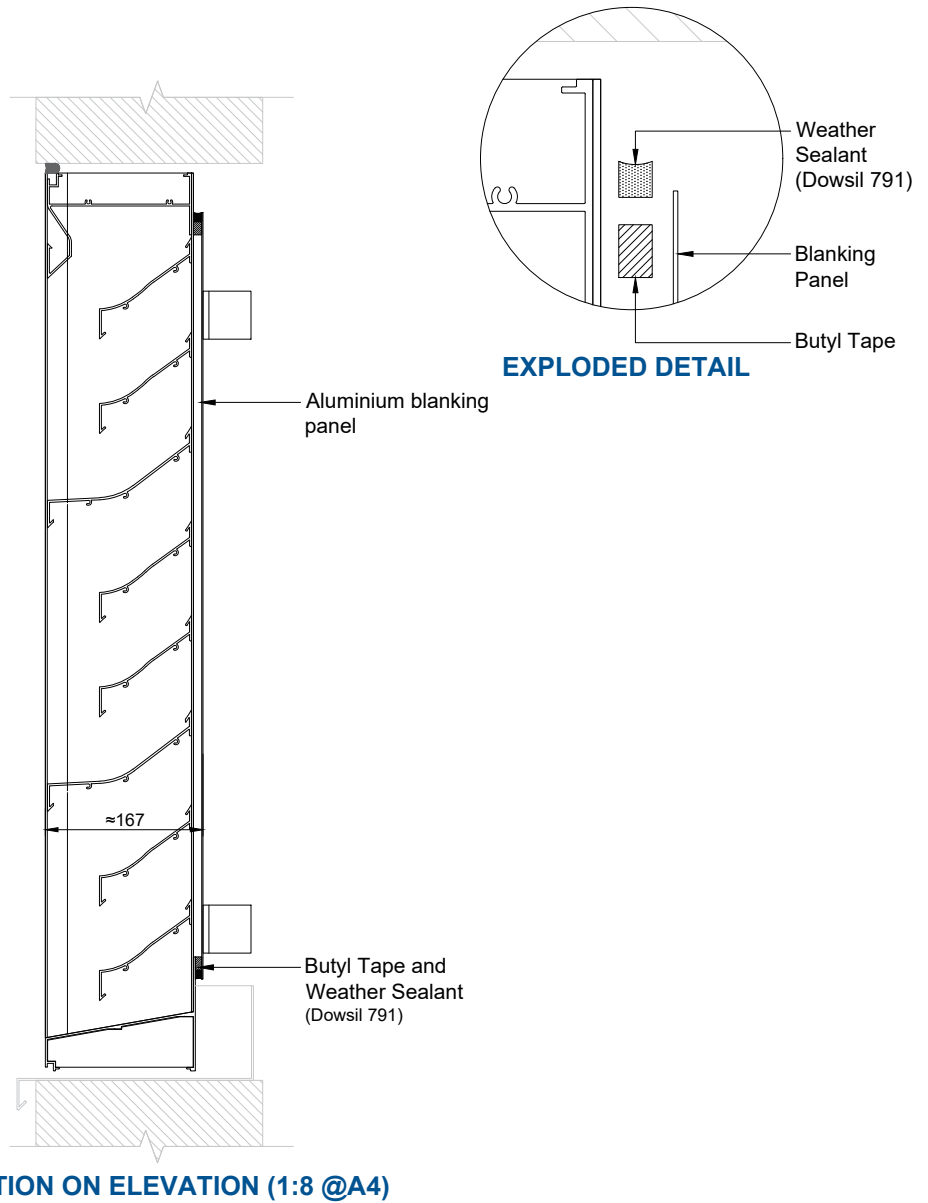


### PLAN VIEW (1:8 @A4)

All dimensions in millimeters unless otherwise stated. Do not scale from the drawing.

## STANDARD DETAIL

With Single Skin Blanking Panel



All dimensions in millimeters unless otherwise stated. Do not scale from the drawing.

# Ventilation Louvres

B-6485 | Technical Datasheet

## STANDARD DETAIL

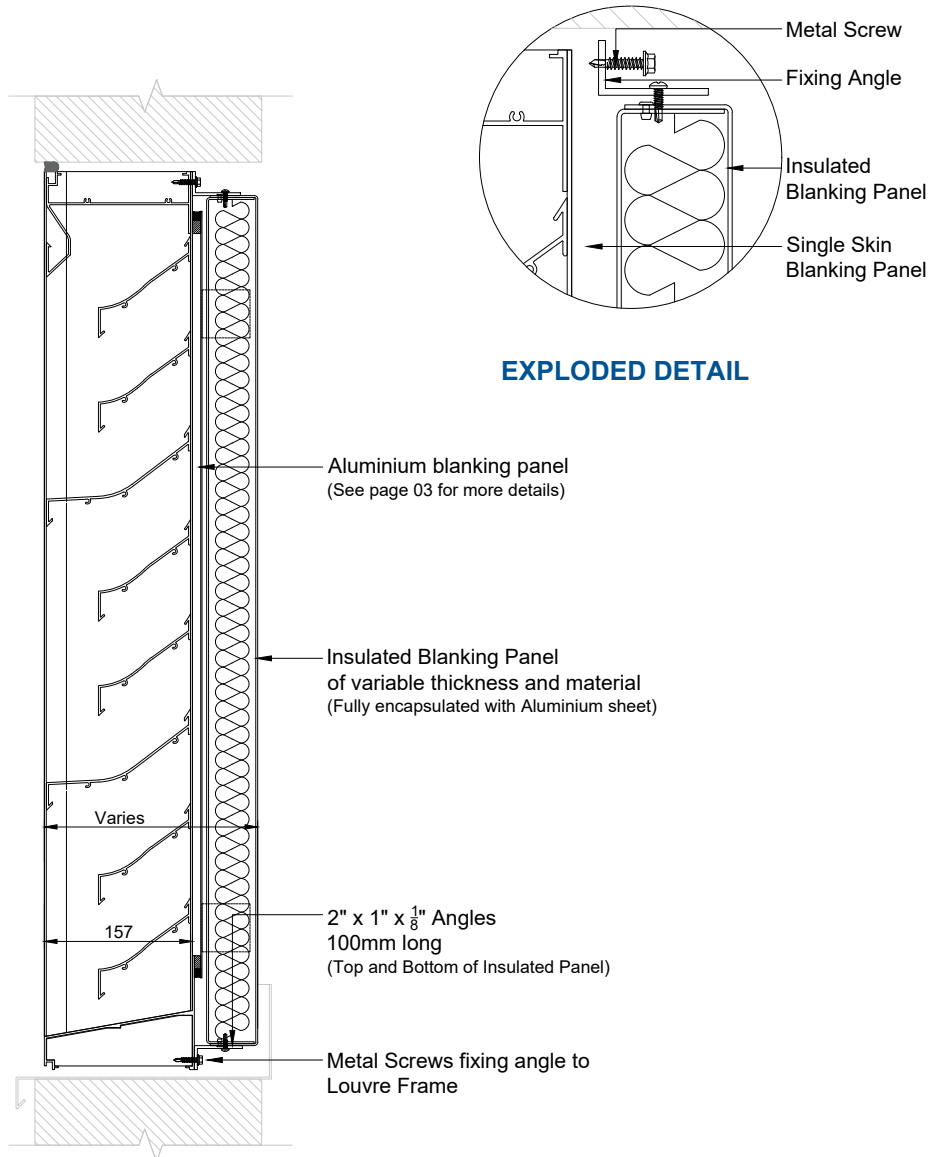
With Insulated Blanking Panel

**NOTE:**

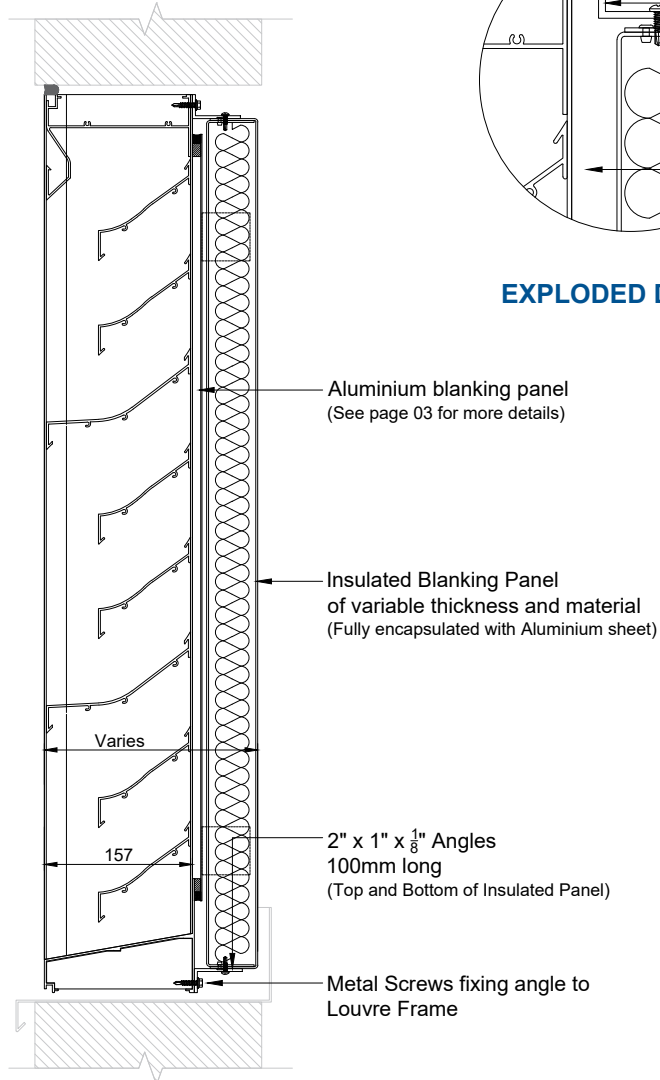
Insulation material options include:

- Non-combustible, A1 classified (to EN 13501-1) high strength stone wool core faced with open filament net
- Extruded polystyrene core

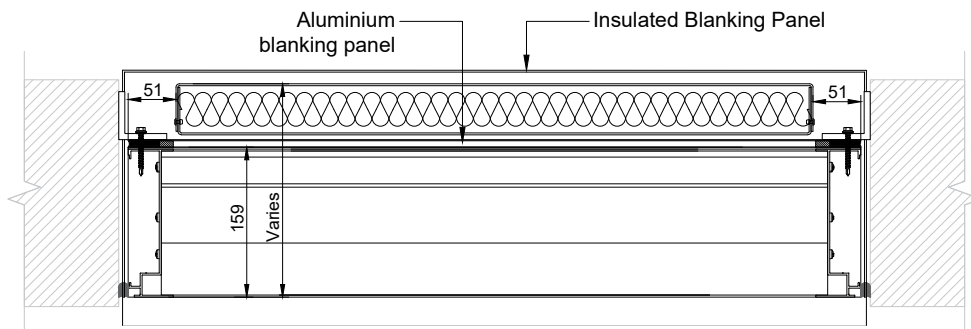
Panel thicknesses will vary, depending on the chosen core type and project's insulation requirements.



**EXPLODED DETAIL**



**SECTION ON ELEVATION (1:8 @A4)**



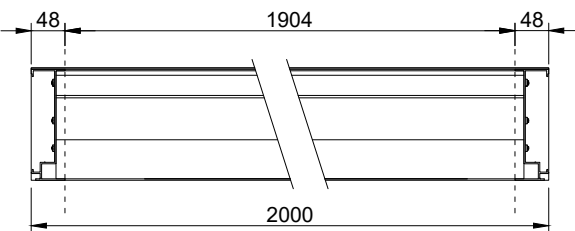
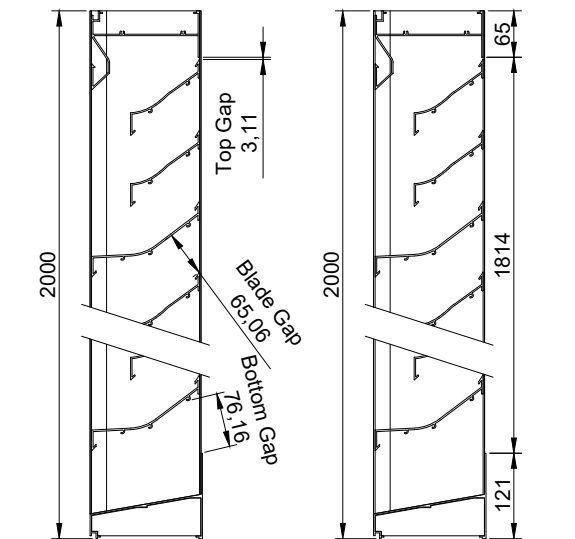
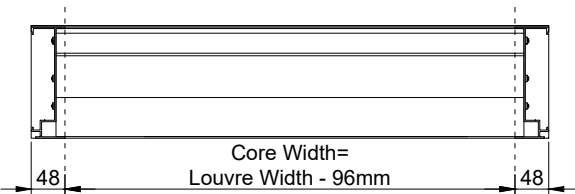
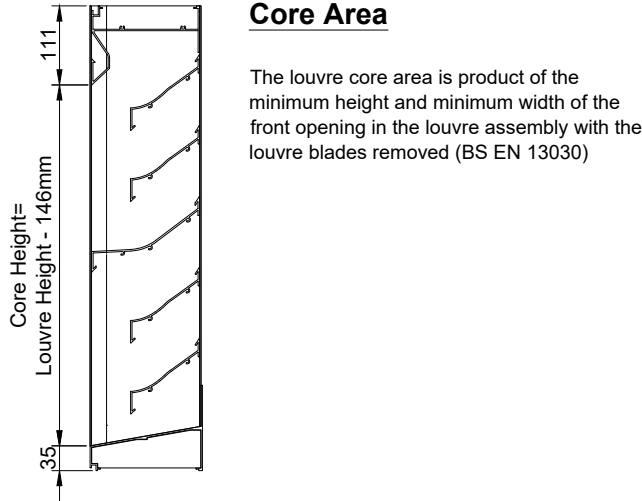
**PLAN VIEW (1:8 @A4)**

All dimensions in millimeters unless otherwise stated. Do not scale from the drawing.

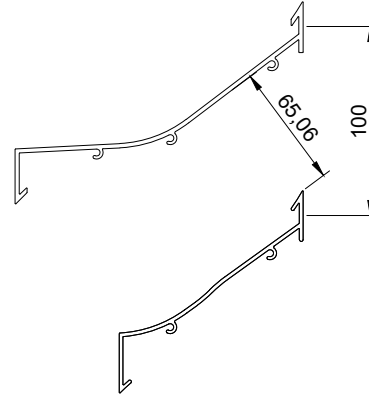
# Ventilation Louvres

B-6485 | Technical Datasheet

## APPENDIX A - FREE AREA



## Free Area Between Blades



The percentage free area between the blades is calculated by taking the narrowest gap between the blades and dividing it by the blade pitch.

$$65.06/100 = 65.1\%$$

## Free Area

Total free area is determined by multiplying the sum of the minimum distance between intermediate blades, top blade and head, and bottom blade and cill, by the minimum distance between jambs.

Percentage free area is calculated by dividing the total free area by the overall louvre size.

### Example based on 2m x 2m louvre

- No. of blades - 18
- A - No. of gaps between blades - 17
- B - Top gap - 3.11mm
- C - Blade gap - 65.06mm
- D - Bottom gap - 76.16mm
- E - Width between jambs - 1904mm

### Total Free Area

$$((B + (C \times A) + D) \times E)$$

$$((0.00311 + (0.06505 \times 17) + 0.07616) \times 1.904) = 2.256m^2$$

### Percentage Free Area

$$2.256/4 = 56.4\%$$

### Approximate Free Area

#### Total Free Area

Open at rear of louvre x percentage free area between blades

$$1.814 \times 1.904 \times 65.1\% = 2.248m^2$$

#### Percentage Free Area

$$2.248/4 = 56.2\%$$

All dimensions in millimeters unless otherwise stated. Do not scale from the drawing.